



KELSO Christmas CRACKERS SALE



Consignments from

**BRIJON | BRONTEMOOR | DUHONW | GRANITE
HAYMOUNT | LOGIE DURNO | MERSHOTT | ROXBURGH**

FRIDAY 9th DECEMBER 2022

within Borderway Mart, Carlisle CA1 2RS



**HARRISON &
HETHERINGTON**

**Harrison & Hetherington Ltd
Borderway, Rosehill, Carlisle CA1 2RS**

**www.harrisonandhetherington.co.uk
Tel: 01228 406230/406200**



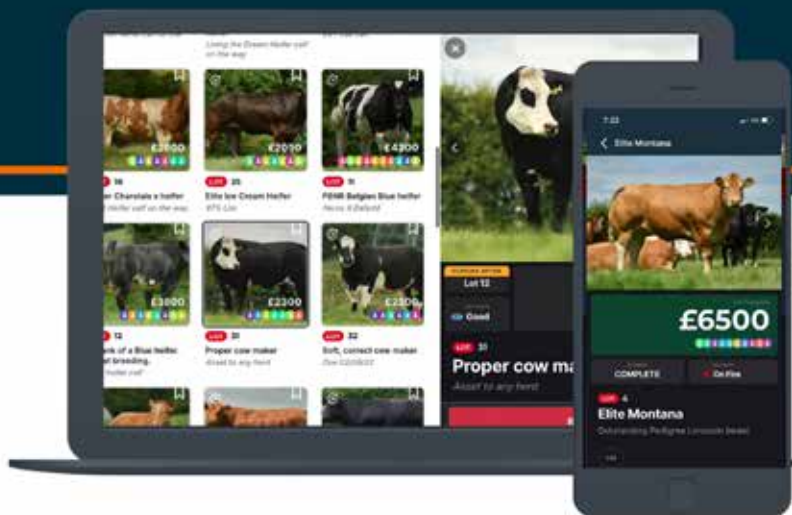
ONLINE BIDDING NOW AVAILABLE

Simply Download the **MartEye App** from your phone App Store & Register.
Then press the **JOIN** button on the Harrison and Hetherington page.



ALSO AVAILABLE ON WEBSITE:

handh.marteye.ie



MartEye™

PLEASE BRING THIS CATALOGUE TO THE SALE

THE KELSO CHRISTMAS CRACKER SALE

83 IN LAMB FEMALES

presenting

**BRIJON FLOCK – J WATSON & CO
18 SHEARLING GIMMERS**

**BRONTEMOOR FLOCK – JM & SM PRIESTLEY
10 SHEARLING GIMMERS**

**DUHONW FLOCK – JE & SJL JAMES
8 SHEARLING GIMMERS**

**HAYMOUNT FLOCK – WJ ARNOTT
8 SHEARLING GIMMERS**

**LOGIE DURNO & GRANITE FLOCKS – W&C INGRAM
18 SHEARLING GIMMERS**

**MERSHOTT FLOCK – J ELLIOT
7 SHEARLING GIMMERS**

**ROXBURGH FLOCK – J ELLIOT
14 SHEARLING GIMMERS**

FRIDAY 9th DECEMBER 2022

Sale to commence 12.30pm

to be held at Borderway Mart, Rosehill, Carlisle
(adjacent to J43 M6 Motorway)



**HARRISON &
HETHERINGTON**

Head Office:

Borderway Mart Rosehill Carlisle CA1 2RS

Tel: 01228 406230 or 01228 406200

E-mail: info@borderway.com

Website: www.harrisonandhetherington.co.uk

HARRISON & HETHERINGTON LTD

NOTICE TO PURCHASERS

Business trading terms and settlement of purchases

Payment due on Day of Purchase

(This will be strictly adhered to)

Interest chargeable from date of purchase at 7.25%

over Clydesdale Bank base rate at the time, for accounts in default

Purchases shall be governed by and construed in accordance with the law in
England and Scotland

Accepted form of payments

debit card, direct bank transfer; cheque - known customers only

2% surcharge will apply to Business Credit Card payments

If payment is made by credit card, it must be linked to a business bank account

Completion of a Buyers Slip is essential for parties who have not dealt
with the Company before.

No Lots can leave the market without a 'Pass Slip' being issued by the
main office.

New customers and or agents wishing to purchase on behalf of another party
must contact the company's main office at Carlisle at least 48 hours prior to
sale, to provide full details and references for authorisation

Please note that all lots/items must be settled on the day of purchase and prior
to clearance of any stock

For the avoidance of doubt H&H reserve the right to contra or keep sale proceeds
to offset against an outstanding account.

Purchasers from Outside the United Kingdom

Invoices will be raised in pounds sterling



IMPORTANT NOTICE TO PROSPECTIVE PURCHASERS

ALL LOTS MUST BE SETTLED ON THE DAY OF PURCHASE

Parties who have not dealt with the company before should complete the undernoted form
and hand it in to the auctioneers' clerk when a purchase is made.

Alternatively it can be sent to the main office in advance of the sale.

Please fold and detach along this perforation

SALE

TRADING NAME

PARTNERS NAMES (if applicable)

.....

.....

FULL POSTAL ADDRESS

.....

.....

.....

POSTCODE

TEL. NO.

HOLDING NO. FLOCK No.

DESTINATION DETAILS OF ANIMALS IF DIFFERENT FROM ABOVE

CPH POST CODE

THE UK'S LEADING LIVESTOCK MARKETING COMPANY

- EIGHT SALE CENTRES
- PEDIGREE & COMMERCIAL LIVESTOCK
- OFFICIAL SOCIETY SALES OF BEEF, DAIRY & SHEEP
- TRACTORS, MACHINERY & COMMERCIAL VEHICLES
- SPECIALIST LIVESTOCK SALES, EQUINE & EVENTS
- PROFESSIONAL VALUATIONS
- ONLINE INTERNET BIDDING



01228 406200

harrisonandhetherington.co.uk

BORDERWAY MART, CARLISLE, CUMBRIA CA1 2RS



BIO SECURITY RULES

HARRISON & HETHERINGTON LIMITED

BORDERWAY MART CARLISLE

Notice to all Visitors and Traders

Please read and observe the following:

- Excessive dirty vehicles will not be allowed entry, therefore ensure vehicle is clean before arrival.
- All vehicles transporting livestock will be subject to a documentation check before entry to market site.
- All visitors and traders must ensure they wear clean clothing and footwear before entering market site.
- All visitors and traders using car park areas please use main entrance.
- All persons delivering livestock to mart must park on the hardcore area at the back of the site and then proceed along the designated route to the biosecurity control next to the supervisors office.
- Hauliers and farmers delivering livestock must disinfect their boots before and after loading or unloading.
- Livestock purchased or unsold will not be allowed to move unless an authorised "pass slip" has been issued by the main office.
- No livestock will be allowed to remain on the premises after a sale.
- Only staff, livestock hauliers, owners or their agents are permitted to load or unload livestock.
- Wash hands thoroughly when leaving livestock pennage areas.
- Please observe our staff's instructions at all times.

**Our on site Biosecurity Officer
will only be too pleased to give you assistance.**

Our Heritage – Your Future





The Texel Sheep Society provides performance recording services directly to its membership and continues to support the National Terminal Sire Evaluation.

Traits Available	Average	Top 25%	Top 10%
Litter size Indicates prolificacy, number of lambs born alive/dead	0.06	0.09	0.12
Eight-week weight (kg) Growth rate to eight-weeks of age (measured between 42-84 days)	1.72	2.32	2.86
Maternal ability Milk production and the ability to rear lambs	0.05	0.23	0.40
Scan weight (kg) Growth rate to 35-40kg, measured at ultrasound scanning	4.41	5.93	7.29
Muscle depth (mm) Carcase muscling across the loin at 35-40kg, measured by a technician	-0.06	0.37	0.75
Fat depth (mm) Carcase leanness across the loin at 35-40kg, measured by a technician	-0.38	-0.18	-0.01
Gigot muscularity (mm) Thickness of muscle around the gigot, indicating shape; measured by a CT Scanner	0.07	0.38	0.66
Terminal Index Profitable slaughter lambs	167	197	224

The aim of EBVs is to allow buyers to see how much of an animal's performance is due to its breeding (genetics) and how much has been influenced by the environment that they have been kept in – management, feeding, farm location, housing etc

An animal will pass on half of its genetic merit to its offspring.

e.g., if Ram A has a Scan Weight EBV of +3.33 then his progeny at scanning will be over 1.5kg heavier than average

Inbreeding within the national pedigree Texel flock

Use the Mating Predictor Tool now on iTexel

Members are encouraged to use the mating predictor on iTexel to manage levels of inbreeding within their flocks. You cannot assess ewe/ram combinations by eye. The Mating Predictor estimates the inbreeding value of the offspring from a particular pairing.

The predictor is available on your smart phone as well as desktop

To check the ram(s) you're interested in purchasing and see how they combine with your ewes:

1. Login to iTexel, click Mating Predictor
2. Choose 'New Combination' to select a Sire and Ewes
3. Click 'View Results'
4. A summary will appear with the number in brackets displaying the predicted inbreeding coefficient. A coefficient below 7 is desirable



Inbreeding can be defined as the mating of related individuals, or of individuals with shared ancestors. A balance needs to be maintained between selecting animals to optimise rates of genetic gain and minimise levels of inbreeding.

Increasing levels of inbreeding can result in inbreeding depression, where performance can suffer. It can be argued that any animal is only one mating away from being outbred.

Each animal's inbreeding coefficient value is now displayed in the sales catalogue. The lower the level of inbreeding the better; a value of 7% or below is regarded as an acceptable level of inbreeding within a breeding programme.

General Information & Sale Notes

LOCATION - The Sale will be held in the Borderway Mart, Carlisle Cumbria. Motorists should leave the M6 at Junction 43 and follow CARLISLE signs. The Market is on the left hand side of the road within 1/4 mile of M6.

VIEWING - The Sale Sheep will be available for viewing at Borderway Mart, Carlisle from 8am on sale day or prior viewing of the sheep is most welcome by appointment with the vendors (see page 9).

CONDITIONS OF SALE - Sold under the conditions of sale as recommended by The Livestock Auctioneers' Association.

METHOD OF SALE - All sheep will be sold in guineas (105 pence) and strictly in catalogue order, unless any alteration is announced by the Auctioneers.

COMMISSIONS - The Auctioneers will dutifully execute commissions to purchase for buyers unable to attend the sale personally, upon receipt of written instructions.

SETTLEMENT AND CLEARANCE OF STOCK - Settlement in full is due immediately at the close of Sale. No animal may leave the Sale Premises without an official 'Pass Slip', obtainable only from the Auctioneers upon settlement.

ONLINE BIDDING - Online bidding facility available via handh.marteye.ie.

LUCKPENNY INSURANCE

*Each vendor will announce at time of sale
of any insurance provided.*

Detailed information of Texel Sheep Society

British Texel Sheep Society

Unit 74, 4th Street, Stonleigh Park, Kenilworth, Warwickshire CV8 2LG
Telephone: 02476 696629 www.texel.uk

CONSIGNORS

ARNOTT, W JACK	HAYMOUNT	1016-1023
HAYMOUNT FARM, KELSO, SCOTTISH BORDERS, TD5 7RR. 07388 558 220.		
ELLIOT, JOHN	ROXBURGH	995-1008
ROXBURGH MAINS, KELSO, ROXBURGHSHIRE, SCOTTISH BORDERS, TD5 8NJ. 07795 165 140.		
ELLIOT, JOHN	MERSHOTT	1009-1015
UPPER HUNTLYWOOD FARM, HUNTLYWOOD, EARL-STON, SCOTTISH BORDERS, TD4 6BB. 07795 165 140.		
INGRAM, W & C	LOGIE DURNO & GRANITE	959-976
LOGIE DURNO FARM, PITCAPLE, INVERURIE, ABERDEENSHIRE, AB51 5EL. 07974 746 581.		
JAMES, J E & S J L	DUHONW	941-948
NEUADD-BLAENDUHONW, MAESMYNIS, BUILT H WELLS, POWYS, LD2 3HT. 07766 015121.		
PRIESTLEY, J M & S M	BRONTEMOOR	949-958
CRACROP FARM, KIRKCAMBECK, BRAMP-TON, CUMBRIA, CA8 2BW. 07812 456736.		
WATSON & CO, J	BRIJON	977-994
BOWSDEN MOOR, BOWSDEN, BERWICK-UPON-TWEED, NORTHUMBERLAND, TD15 2TG. 07970 131 425.		

ONLINE BIDDING NOW AVAILABLE

Simply Download the **MartEye App** from your phone App Store & Register. Then press the **JOIN** button on the Harrison and Hetherington page.

Download on the App Store | GET IT ON Google Play

ALSO AVAILABLE ON WEBSITE: handh.marteye.ie

H&H

MartEye

The image shows a hand holding a smartphone displaying the MartEye app interface. The app shows a list of auctions, including 'C District Seaside Ram Sales Day' and '1st Aged Rams & Ram Lambs (View Only)'. Below the phone, there are two auction cards: '1st Angus Sale' and 'James Select'. The background is a dark blue gradient with orange accents.

A collage of images showing various construction and manufacturing activities. The collage is composed of several hexagonal and rectangular frames. In the top left, two workers in blue vests are visible. Next to them is a close-up of a brown paper cup and a black lid. To the right, there's a view of a construction site with red and grey structural elements. Below the cup, a large blue hexagon contains the text 'OPEN TO ALL' in white. To its right, a worker in a plaid shirt and yellow gloves is using a red power tool. In the center, a close-up shows a welding process with bright sparks. Below the 'OPEN TO ALL' hexagon, two workers in orange safety gear are on a construction site. To their right, a red forklift is shown with a worker in a yellow vest. Further right, a worker is using a power tool, creating sparks. At the bottom left, a worker is using a chainsaw on a log. In the bottom center, a large blue hexagon contains the text 'TG' in white. To its right, a worker in a blue jacket is standing. The overall theme is industrial and construction-related.



Est. 1892

Hygiene

www.thomas-graham.co.uk

CATALOGUE

J E & S J L JAMES

DUHONW

JMU

- 941 DUHONW JMU2110532(1) Born: 19/03/2021
Inbreeding coefficient: 4.4
Sire: GREENARCH CAPTAIN CAVEMAN HEV1906978(E1) by MIDLOCK YOURE THE ONE
Dam: JMU1908620(1) by WHITEHART A LISTER HWN1703313(1)
Service Sire: GLENSIDE FORTUNE by SEAFORDE EMPIRE KING PRQ2101840(E1)
Service Details: Served 13/10/22
- 942 DUHONW JMU2110544(2) Born: 10/03/2021
Inbreeding coefficient: 4.2
Sire: WHITEHART A LISTER HWN1703313(1) by BLACKADDER WEAVER
Dam: JMU1502564(1) by GLENSIDE VICTORY II FPG1400805(E)
Service Sire: GLENSIDE FORTUNE by SEAFORDE EMPIRE KING PRQ2101840(E1)
Service Details: Served 13/10/22
- 943 DUHONW JMU2110573(3) Born: 08/03/2021
Inbreeding coefficient: 7.3
Sire: GARNGOUR AWESOME CJN1704913(E) by KNOCK YARDSMAN
Dam: JMU1908594(2) by BALTIER BARON I FEB1800496(E1)
Service Sire: MEINSPRIDE USAIN by GLENSIDE RAZZLE DAZZLE FPG1000055(0)
Service Details: Served 27/09/22
- 944 DUHONW JMU2110559(1) Born: 07/03/2021
Inbreeding coefficient: 8.7
Sire: DUHONW CELTIC STAR JMU1908548(3) by WHITEHART A LISTER
Dam: JMU1806391(1) by STRATHBOGIE YAMAHA IJS1600803(E)
Service Sire: MEINSPRIDE USAIN by GLENSIDE RAZZLE DAZZLE FPG1000055(0)
Service Details: Served 27/09/22
- 945 DUHONW JMU2110523(2) Born: 07/03/2021
Inbreeding coefficient: 4.8
Sire: DUHONW CELTIC STAR JMU1908548(3) by WHITEHART A LISTER
Dam: JMU1502572(2) by TULLYLAGAN TONKA HPY1200404(E)
Service Sire: MEINSPRIDE USAIN by GLENSIDE RAZZLE DAZZLE FPG1000055(0)
Service Details: Served 27/09/22
- 946 DUHONW JMU2110539(2) Born: 05/03/2021
Inbreeding coefficient: 7.9
Sire: DUHONW CELTIC STAR JMU1908548(3) by WHITEHART A LISTER
Dam: JMU1301611(2) by HULL HOUSE TEXAS JACK MJH1203270(E)
Service Sire: GLENSIDE FORTUNE by SEAFORDE EMPIRE KING PRQ2101840(E1)
Service Details: Served 13/10/22

947 DUHONW JMU2110521(2) Born: 19/03/2021
Inbreeding coefficient: 4.6
Sire: GREENARCH CAPTAIN CAVE MAN HEV1906978(E1) by MIDLOCK YOURE THE ONE
Dam: JMU1908605(2) by WHITEHART A LISTER HWN1703313(1)
Service Sire: GLENSIDE FORTUNE by SEAFORDE EMPIRE KING PRQ2101840(E1)
Service Details: Served 13/10/22

948 DUHONW JMU2110549(2) Born: 03/03/2021
Inbreeding coefficient: 4.4
Sire: GREENARCH CAPTAIN CAVE MAN HEV1906978(E1) by MIDLOCK YOURE THE ONE
Dam: JMU1806422(2) by STRATHBOGIE YAMAHA IJS1600803(E)
Service Sire: MEINSPRIDE USAIN by GLENSIDE RAZZLE DAZZLE FPG1000055(0)
Service Details: Served 27/09/22

Service Sires

GLENSIDE FORTUNE FPG2202040(E1) Born: 16/02/2022
Inbreeding coefficient: 8.0
Sire: SEAFORDE EMPIRE KING PRQ2101840(E1) by SPORTSMANS CANNON BALL
Dam: PFJ2002626(2) by USK VALE CAPTAIN BILLY UVP1903616(E1)

MEINSPRIDE USAIN LNM1301533(2) Born: 16/02/2013
Inbreeding coefficient: 4.5
Sire: GLENSIDE RAZZLE DAZZLE FPG1000055(0) by STRATHBOGIE PYTHON
Dam: LNM1000088(0) by GLENSIDE DRUM MAJOR FPG97065(2)

JM & SM PRIESTLEY BRONTEMOOR PSR

949 BRONTEMOOR PSR2104662(E2) Born: 30/01/2021
Inbreeding coefficient: 3.8
Sire: LOGIE DURNO BRAVEHEART IGB1822914(E1) by CAEREINION ACE
Dam: PSR1802568(1) by HAYMOUNT VAVA VOOM AWJ1400747(E)
Service Sire: SALTCOTES FANCY PANTS by HILLTOP ESCOBAR PKH2102719(E1)
Service Details: Served between 25/09/22 and 11/10/22. Scanned 3.

Logie Durno Braveheart (sire) has bred extremely well within the flock and has sired sons to £32,000 at Kelso 2022

950 BRONTEMOOR PSR2104814(E1) Born: 18/03/2021
Inbreeding coefficient: 3.7
Sire: LOGIE DURNO BRAVEHEART IGB1822914(E1) by CAEREINION ACE
Dam: PSR1701917(2) by BRIJON WARLORD REW1504820(2)
Service Sire: HAYMOUNT FAMOUS by RHAEADRENTREPRENEURENM2102464(E1)
Service Details: Served between 11/10/22 and 25/10/22. Scanned 1.

951 BRONTEMOOR PSR2104768(2) Born: 11/03/2021
Inbreeding coefficient: 3.9
Sire: LOGIE DURNO BRAVEHEART IGB1822914(E1) by CAEREINION ACE
Dam: PSR1802591(1) by PEACEHAY YOUR HIGHNESS CFP1601508(2)
Service Sire: HAYMOUNT FAMOUS by RHAEADRENTREPRENEURENM2102464(E1)
Service Details: Served between 25/09/22 and 11/10/22. Scanned 2.

952	BRONTEMOOR	PSR2104753(1)	Born: 09/03/2021 Inbreeding coefficient: 3.9
	Sire:	LOGIE DURNO BRAVEHEART IGB1822914(E1) by CAEREINION ACE	
	Dam:	PSR1802602(2) by PEACEHAY YOUR HIGHNESS CFP1601508(2)	
	Service Sire:	HAYMOUNT FAMOUS by RHAEADRENTREPRENEUR ENM2102464(E1)	
	Service Details:	Served between 11/10/22 and 25/10/22. Scanned 2.	
953	BRONTEMOOR	PSR2104751(2)	Born: 09/03/2021 Inbreeding coefficient: 3.7
	Sire:	LOGIE DURNO BRAVEHEART IGB1822914(E1) by CAEREINION ACE	
	Dam:	PSR1601543(3) by GLENWAY UPPER CLASS MFZ1300360(E)	
	Service Sire:	HAYMOUNT FAMOUS by RHAEADRENTREPRENEUR ENM2102464(E1)	
	Service Details:	Served between 25/09/22 and 11/10/22. Scanned 2.	
954	BRONTEMOOR	PSR2104756(3)	Born: 09/03/2021 Inbreeding coefficient: 3.6
	Sire:	LOGIE DURNO BRAVEHEART IGB1822914(E1) by CAEREINION ACE	
	Dam:	PSR1903323(2) by PEACEHAY YOUR HIGHNESS CFP1601508(2)	
	Service Sire:	HAYMOUNT FAMOUS by RHAEADRENTREPRENEUR ENM2102464(E1)	
	Service Details:	Served between 11/10/22 and 25/10/22. Scanned 2.	
955	BRONTEMOOR	PSR2104818(E1)	Born: 19/03/2021 Inbreeding coefficient: 3.7
	Sire:	LOGIE DURNO BRAVEHEART IGB1822914(E1) by CAEREINION ACE	
	Dam:	PSR1701917(2) by BRIJON WARLORD REW1504820(2)	
	Service Sire:	HAYMOUNT FAMOUS by RHAEADRENTREPRENEUR ENM2102464(E1)	
	Service Details:	Served between 11/10/22 and 25/10/22. Scanned 2.	
956	BRONTEMOOR	PSR2104699(3)	Born: 28/02/2021 Inbreeding coefficient: 4.7
	Sire:	GRANITE CLANSMAN IGM1927576(E2) by LOGIE DURNO BRAVEHEART	
	Dam:	PSR1701983(2) by TEIGLUM STARBUCK CFT1100949(E)	
	Service Sire:	SALTCOTES FANCY PANTS by HILLTOP ESCOBAR PKH2102719(E1)	
	Service Details:	Served between 11/10/22 and 25/10/22. Scanned 2.	
957	BRONTEMOOR	PSR2104717(1)	Born: 02/03/2021 Inbreeding coefficient: 3.8
	Sire:	LOGIE DURNO BRAVEHEART IGB1822914(E1) by CAEREINION ACE	
	Dam:	PSR1903282(2) by BRIJON WARLORD REW1504820(2)	
	Service Sire:	SALTCOTES FANCY PANTS by HILLTOP ESCOBAR PKH2102719(E1)	
	Service Details:	Served between 11/10/22 and 25/10/22. Scanned 3.	

958 BRONTEMOOR PSR2104704(2) Born: 28/02/2021
Inbreeding coefficient: 3.9
Sire: LOGIE DURNO BRAVEHEART IGB1822914(E1) by CAEREINION ACE
Dam: PSR1802564(1) by HAYMOUNT VAVA VOOM AWJ1400747(E)
Service Sire: HAYMOUNT FAMOUS by RHAEADR ENTREPRENEUR ENM2102464(E1)
Service Details: Served between 11/10/22 and 25/10/22. Scanned 2.

Service Sires

HAYMOUNT FAMOUS AWJ2202867(E2) Born: 04/03/2022
Inbreeding coefficient: 6.3
Sire: RHAEADR ENTREPRENEUR ENM2102464(E1) by SPORTSMANS DARE DEVIL
Dam: AWJ1701318(2) by CLINTERTY YUGA KHAN BBY1601056(E)

Purchased for 5000gns at Carlisle 2022

SALTCOTES FANCY PANTS PTJ2200110(E1) Born: 12/02/2022
Inbreeding coefficient: 9.2
Sire: HILLTOP ESCOBAR PKH2102719(E1) by CASTLECAIRN DIAMOND VISION
Dam: PTJ2100038(E1) by CRAIG DOUGLAS DANCER XSR2023203(1)

Purchased for 1500gns at Carlisle 2022

THE UK'S LEADING LIVESTOCK MARKETING COMPANY

- EIGHT SALE CENTRES
- PEDIGREE & COMMERCIAL LIVESTOCK
- OFFICIAL SOCIETY SALES OF BEEF, DAIRY & SHEEP
- TRACTORS, MACHINERY & COMMERCIAL VEHICLES
- SPECIALIST LIVESTOCK SALES, EQUINE & EVENTS
- PROFESSIONAL VALUATIONS
- ONLINE INTERNET BIDDING



01228 406200

harrisonandhetherington.co.uk

BORDERWAY MART, CARLISLE, CUMBRIA CA1 2RS



The Logie Durno flock was founded in 1999 with the purchase of a few select ewes from some top flocks at the time. Over the last number of years our primary focus has been producing fit for purpose shearling rams designed to meet the needs of our commercial customers with the vast majority of the rams being sold from the farm to returning buyers with 84 Texels sold from the farm in 2022 to average £1047. This year we also decided to take a pen of rams to Kelso for the first time, they far surpassed any expectations we could have had winning Champion and Reserve in the Hexham pre sale show class and also Champion recorded ram, then going on to sell to a top of £32,000 achieving an average of £6566 for the pen of 9 rams.

Over the years we have endeavoured to purchase as good rams as possible to bring the flock forward, focusing on skins toplines and backends, as this is what our buyers are looking for. More recently we have also used a few homebred rams with particular success, with 8 of the 9 rams at Kelso sired by Homebred Sires.

All gimmers for sale have ran naturally from the 23rd of September onwards with the much admired 14,000gns Feddal Road Easy Peasy who has left a super first crop of lambs with immaculate skins, well fleshed shoulder and deep hard gigots.



CHAMPION - £32,000 KELSO

959 LOGIE DURNO IGB2138122(E2) Born: 11/02/2021
 Inbreeding coefficient: 4.1
Sire: LOGIE DURNO BRAVEHEART IGB1822914(E1) by CAEREINION ACE
Dam: IGB1615591(2) by DEVERONVALE WARRIOR MGV1500768(1)

	Litter Sz	8 Wk Wgt	Maternal	Scan Wgt	Musc Depth	Fat Depth	CT Gigot Musc	Index
EBV	0.01	3.04kgs	1.02kgs	7.68kgs	-1.40mm	-0.63mm	-0.04mm	181
Accuracy	67%	61%	61%	65%	64%	64%	18%	62%

Service Sire: FEDDAL ROAD EASYPEASY by ELLEN VALLEY DAZZLER YGW2006755(1)

Service Details: Ran from 23/09/22

Full brother sold for £2400 at Kelso. Dam is a massive ewe sired by the 19,000gn Deveronvale Warrior.

960 LOGIE DURNO IGB2138290(E2) Born: 27/03/2021
 Inbreeding coefficient: 9.3
Sire: GRANITE CHIEFTAIN IGM1927579(E2) by LOGIE DURNO BRAVEHEART
Dam: IGB1512870(3) by GRANITE VORTEX IGM1410379(E)

	Litter Sz	8 Wk Wgt	Maternal	Scan Wgt	Musc Depth	Fat Depth	CT Gigot Musc	Index	Ranking
EBV	-0.03	2.68kgs	0.18kgs	6.86kgs	0.15mm	-0.90mm	-0.67mm	210	TOP 25%
Accuracy	58%	56%	56%	61%	60%	61%	20%	58%	

Service Sire: FEDDAL ROAD EASYPEASY by ELLEN VALLEY DAZZLER YGW2006755(1)

Service Details: Ran from 23/09/22

A smart gimmer with style and carcase. Full brothers have sold to a top of £1500 at our farm dale this year. Dam has bred sons to a top of £3000 in previous years.



LOT 960

961**GRANITE****IGM2138322(E2)****Born: 10/02/2021****Inbreeding coefficient: 6.3****Sire:** GRANITE CHIEFTAIN IGM1927579(E2) by LOGIE DURNO BRAVEHEART**Dam:** IGM1718836(E) by KIMBOLTON WARRIOR PPK1500527(1)

	Litter Sz	8 Wk Wgt	Maternal	Scan Wgt	Musc Depth	Fat Depth	CT Gigot Musc	Index	Ranking
EBV	0.03	2.86kgs	0.29kgs	6.95kgs	0.10mm	-0.81mm	0.10mm	213	TOP 25%
Accuracy	57%	53%	53%	58%	57%	58%	25%	55%	

Service Sire: FEDDAL ROAD EASYPEASY by ELLEN VALLEY DAZZLER YGW2006755(1)**Service Details:** Ran from 23/09/22

Sired by Granite Chieftain who is full brother to £32,000 ram we sold at Kelso 2022.
 From the same female line as Lot 960.

**LOT 961**

962 GRANITE IGM2138310(E2) Born: 10/02/2021
Inbreeding coefficient: 10.5
Sire: GRANITE CHIEFTAIN IGM1927579(E2) by LOGIE DURNO BRAVEHEART
Dam: IGM1823140(2) by CAEREINION ACE PEC1700528(E)

	Litter Sz	8 Wk Wgt	Maternal	Scan Wgt	Musc Depth	Fat Depth	CT Gigot Musc	Index	Ranking
EBV	0.02	2.84kgs	0.61kgs	7.57kgs	-0.34mm	-0.68mm	-0.05mm	209	TOP 25%
Accuracy	57%	50%	50%	56%	55%	56%	19%	52%	

Service Sire: FEDDAL ROAD EASYPEASY by ELLEN VALLEY DAZZLER YGW2006755(1)

Service Details: Ran from 23/09/22

Dam is a huge bodied ewe from a powerful female line. Full brother to this gimmer sold for £1200 from the farm 2022



LOT 962

963 LOGIE DURNO IGB2138232(2) Born: 06/03/2021
Inbreeding coefficient: 3.5
Sire: CAEREINION ACE PEC1700528(E) by KIMBOLTON VENTURER
Dam: IGB1822893(E1) by ALLANFAULD AM THE MAN XMM1713291(E)

	Litter Sz	8 Wk Wgt	Maternal	Scan Wgt	Musc Depth	Fat Depth	CT Gigot Musc	Index
EBV	-0.01	1.46kgs	0.67kgs	3.83kgs	0.68mm	-0.53mm	0.08mm	179
Accuracy	67%	59%	59%	63%	62%	63%	28%	61%

Service Sire: FEDDAL ROAD EASYPEASY by ELLEN VALLEY DAZZLER YGW2006755(1)

Service Details: Ran from 23/09/22

A natural lamb out of Logie Durno Braveheart's sire. Dam had sons selling to £2000 at Kelso 2022.

964 GRANITE IGM2138319(E2) Born: 10/02/2021
Inbreeding coefficient: 10.5
Sire: GRANITE CHIEFTAIN IGM1927579(E2) by LOGIE DURNO BRAVEHEART
Dam: IGM1823140(2) by CAEREINION ACE PEC1700528(E)

	Litter Sz	8 Wk Wgt	Maternal	Scan Wgt	Musc Depth	Fat Depth	CT Gigot Musc	Index	Ranking
EBV	0.02	2.84kgs	0.61kgs	7.57kgs	-0.34mm	-0.68mm	-0.05mm	209	TOP 25%
Accuracy	57%	50%	50%	56%	55%	56%	19%	52%	

Service Sire: FEDDAL ROAD EASYPEASY by ELLEN VALLEY DAZZLER YGW2006755(1)

Service Details: Ran from 23/09/22

Full sister to Lot 962

965 **LOGIE DURNO** **IGB2138254(E1)** **Born: 11/02/2021**

Inbreeding coefficient: 9.3

Sire: GRANITE CHIEFTAIN IGM1927579(E2) by LOGIE DURNO BRAVEHEART

Dam: IGB1512870(3) by GRANITE VORTEX IGM1410379(E)

	Litter Sz	8 Wk Wgt	Maternal	Scan Wgt	Musc Depth	Fat Depth	CT Gigot Musc	Index	Ranking
EBV	-0.03	2.68kgs	0.18kgs	6.86kgs	0.15mm	-0.90mm	-0.67mm	210	TOP 25%
Accuracy	58%	56%	56%	61%	60%	61%	20%	58%	

Service Sire: FEDDAL ROAD EASYPEASY by ELLEN VALLEY DAZZLER YGW2006755(1)

Service Details: Ran from 23/09/22

Full sister to Lot 960



LOT 965

966 **LOGIE DURNO** **IGB2138213(2)** **Born: 25/02/2021**

Sire: GRANITE CHIEFTAIN IGM1927579(E2) by LOGIE DURNO BRAVEHEART

Dam: IGB1718653(2) by GRANITE UNTOUCHABLE IGM1307611(E)

Service Sire: FEDDAL ROAD EASYPEASY by ELLEN VALLEY DAZZLER YGW2006755(1)

Service Details: Ran from 23/09/22

A natural twin out of one of our highest index ewes. Twin brother sold for £1150 at our on farm sale.



LOT 966

967 LOGIE DURNO IGB2138182(E2) Born: 27/03/2021
Inbreeding coefficient: 6.1
Sire: GRANITE CHIEFTAIN IGM1927579(E2) by LOGIE DURNO BRAVEHEART
Dam: IGB1615518(E) by DEVERONVALE WARRIOR MGV1500768(1)

	Litter Sz	8 Wk Wgt	Maternal	Scan Wgt	Musc Depth	Fat Depth	CT Gigot Musc	Index	Ranking
EBV	-0.03	3.33kgs	0.39kgs	8.40kgs	-0.25mm	-0.92mm	-0.61mm	223	TOP 25%
Accuracy	58%	55%	55%	60%	58%	59%	18%	57%	

Service Sire: FEDDAL ROAD EASYPEASY by ELLEN VALLEY DAZZLER YGW2006755(1)

Service Details: Ran from 23/09/22

Dam is one of the most consistent breeders, leaving top quality commercial yearlings time after time, selling to a top of £1400 at the farm sale 2022.

968 LOGIE DURNO IGB2138143(E2) Born: 11/02/2021
Inbreeding coefficient: 9.9
Sire: LOGIE DURNO BRAVEHEART IGB1822914(E1) by CAEREINION ACE
Dam: IGB1718720(E) by KIMBOLTON VENTURER PPK1400423(E)

	Litter Sz	8 Wk Wgt	Maternal	Scan Wgt	Musc Depth	Fat Depth	CT Gigot Musc	Index
EBV	0.04	2.36kgs	0.64kgs	6.10kgs	-1.33mm	-0.64mm	0.59mm	159
Accuracy	64%	58%	58%	62%	61%	62%	26%	60%

Service Sire: FEDDAL ROAD EASYPEASY by ELLEN VALLEY DAZZLER YGW2006755(1)

Service Details: Ran from 23/09/22

Another strong gimmer, dam is maternal sister to the dam of Lot 967.



LOT 968

969 LOGIE DURNO IGB2138200(E2) Born: 27/03/2021
Inbreeding coefficient: 6.1
Sire: GRANITE CHIEFTAIN IGM1927579(E2) by LOGIE DURNO BRAVEHEART
Dam: IGB1615518(E) by DEVERONVALE WARRIOR MGV1500768(1)

	Litter Sz	8 Wk Wgt	Maternal	Scan Wgt	Musc Depth	Fat Depth	CT Gigot Musc	Index	Ranking
EBV	-0.03	3.33kgs	0.39kgs	8.40kgs	-0.25mm	-0.92mm	-0.61mm	223	TOP 25%
Accuracy	58%	55%	55%	60%	58%	59%	18%	57%	

Service Sire: FEDDAL ROAD EASYPEASY by ELLEN VALLEY DAZZLER YGW2006755(1)

Service Details: Ran from 23/09/22

Full sister to Lot 967

970 LOGIE DURNO IGB2138287(E2) Born: 27/03/2021
Inbreeding coefficient: 6.3
Sire: GRANITE CHIEFTAIN IGM1927579(E2) by LOGIE DURNO BRAVEHEART
Dam: IGB1615590(2) by DEVERONVALE WARRIOR MGV1500768(1)

	Litter Sz	8 Wk Wgt	Maternal	Scan Wgt	Musc Depth	Fat Depth	CT Gigot Musc	Index	Ranking
EBV	0.00	3.12kgs	0.53kgs	7.87kgs	-0.04mm	-0.92mm	-0.49mm	219	TOP 25%
Accuracy	58%	53%	53%	58%	57%	58%	18%	55%	

Service Sire: FEDDAL ROAD EASYPEASY by ELLEN VALLEY DAZZLER YGW2006755(1)

Service Details: Ran from 23/09/22

Full brother sold for £1800 at Kelso.

971 LOGIE DURNO IGB2138140(E2) Born: 11/02/2021
Inbreeding coefficient: 7.0
Sire: GRANITE CHIEFTAIN IGM1927579(E2) by LOGIE DURNO BRAVEHEART
Dam: IGB1927610(E2) by CLINTERTY YUGA KHAN BBY1601056(E)

	Litter Sz	8 Wk Wgt	Maternal	Scan Wgt	Musc Depth	Fat Depth	CT Gigot Musc	Index	Ranking
EBV	0.01	3.15kgs	0.26kgs	8.32kgs	-0.03mm	-0.84mm	0.01mm	235	TOP 10%
Accuracy	55%	50%	58%	56%	54%	56%	24%	53%	

Service Sire: FEDDAL ROAD EASYPEASY by ELLEN VALLEY DAZZLER YGW2006755(1)

Service Details: Ran from 23/09/22

Dams twin brother sold for £3000, she bred sons to a top of £1200 in 2022.

972 LOGIE DURNO IGB2138102(E2) Born: 10/02/2021
Inbreeding coefficient: 9.9
Sire: LOGIE DURNO BRAVEHEART IGB1822914(E1) by CAEREINION ACE
Dam: IGB1718720(E) by KIMBOLTON VENTURER PPK1400423(E)

	Litter Sz	8 Wk Wgt	Maternal	Scan Wgt	Musc Depth	Fat Depth	CT Gigot Musc	Index
EBV	0.04	2.36kgs	0.64kgs	6.10kgs	-1.33mm	-0.64mm	0.59mm	159
Accuracy	64%	58%	58%	62%	61%	62%	26%	60%

Service Sire: FEDDAL ROAD EASYPEASY by ELLEN VALLEY DAZZLER YGW2006755(1)

Service Details: Ran from 23/09/22

973 GRANITE IGM2138341(E2) Born: 11/02/2021
Inbreeding coefficient: 6.3
Sire: GRANITE CHIEFTAIN IGM1927579(E2) by LOGIE DURNO BRAVEHEART
Dam: IGM1718836(E) by KIMBOLTON WARRIOR PPK1500527(1)

	Litter Sz	8 Wk Wgt	Maternal	Scan Wgt	Musc Depth	Fat Depth	CT Gigot Musc	Index	Ranking
EBV	0.03	2.86kgs	0.29kgs	6.95kgs	0.10mm	-0.81mm	0.10mm	213	TOP 25%
Accuracy	57%	53%	53%	58%	57%	58%	25%	55%	

Service Sire: FEDDAL ROAD EASYPEASY by ELLEN VALLEY DAZZLER YGW2006755(1)

Service Details: Ran from 23/09/22

974 LOGIE DURNO IGB2138123(E2) Born: 11/02/2021
Inbreeding coefficient: 6.1
Sire: GRANITE CHIEFTAIN IGM1927579(E2) by LOGIE DURNO BRAVEHEART
Dam: IGB1615518(E) by DEVERONVALE WARRIOR MGV1500768(1)

	Litter Sz	8 Wk Wgt	Maternal	Scan Wgt	Musc Depth	Fat Depth	CT Gigot Musc	Index	Ranking
EBV	-0.03	3.33kgs	0.39kgs	8.40kgs	-0.25mm	-0.92mm	-0.61mm	223	TOP 25%
Accuracy	58%	55%	55%	60%	58%	59%	18%	57%	

Service Sire: FEDDAL ROAD EASYPEASY by ELLEN VALLEY DAZZLER YGW2006755(1)

Service Details: Ran from 23/09/22

Brothers have sold to a top of £1400 at our on farm sale 2022.

975 LOGIE DURNO IGB2138241(2) Born: 11/03/2021
Inbreeding coefficient: 7.6
Sire: CAEREINION CAPTAIN PEC1900762(E2) by KIMBOLTON ACE
Dam: IGB1823009(E2) by CAEREINION ACE PEC1700528(E)

	Litter Sz	8 Wk Wgt	Maternal	Scan Wgt	Musc Depth	Fat Depth	CT Gigot Musc	Index	Ranking
EBV	0.03	1.73kgs	0.58kgs	4.71kgs	0.55mm	-0.56mm	-0.98mm	211	TOP 25%
Accuracy	62%	57%	57%	61%	60%	61%	36%	59%	

Service Sire: FEDDAL ROAD EASYPEASY by ELLEN VALLEY DAZZLER YGW2006755(1)

Service Details: Ran from 23/09/22

Female line goes back to one of our top show ewes and Brackenridge Strongbow.

976 LOGIE DURNO IGB2138131(E2) Born: 11/02/2021
Inbreeding coefficient: 11.5
Sire: GRANITE CHIEFTAIN IGM1927579(E2) by LOGIE DURNO BRAVEHEART
Dam: IGB1822941(2) by CAEREINION ACE PEC1700528(E)

	Litter Sz	8 Wk Wgt	Maternal	Scan Wgt	Musc Depth	Fat Depth	CT Gigot Musc	Index	Ranking
EBV	-0.02	2.79kgs	0.34kgs	7.32kgs	0.28mm	-0.97mm	-0.15mm	221	TOP 25%
Accuracy	55%	50%	50%	56%	54%	55%	21%	52%	

Service Sire: FEDDAL ROAD EASYPEASY by ELLEN VALLEY DAZZLER YGW2006755(1)

Service Details: Ran from 23/09/22

A well bred gimmer to finish on, full brother was an exceptional ram selling for the top price at the on farm sale at £1675.

Reference to Service Sires:

FEDDAL ROAD EASYPEASY SFM2101021(E1) Born: 03/02/2021
Inbreeding coefficient: 5.4

Sire: ELLEN VALLEY DAZZLER YGW2006755(1) by FAR HEY CANNONBALL

Dam: SFM1900711(E1) by FEDDAL ROAD BOSS HOGG SFM1800639(E1)

Purchased for 14,000gns, he has a tremendous first crop of lambs with great skins and hard muscling throughout

J WATSON & CO BRIJON REW

977 BRIJON REW2108189(E2) Born: 01/03/2021
Inbreeding coefficient: 4.3

Sire: MIDLOCK CAPONE WKM1927275(E2) by KNOCK BANTASTIC

Dam: REW1705745(E) by PANT WOLF JLP1501161(1)

Service Sire: LOOSEBEARE DIGGER by SPORTSMANS BULLETPROOF BGS1803224(1)

Service Details: Served 29/09/22

Scanned 2.

978 BRIJON REW2108311(2) Born: 01/03/2021
Inbreeding coefficient: 4.3

Sire: PANT WOLF JLP1501161(1) by LOOSEBEARE UNIQUE

Dam: REW1806467(1) by MILNBANK ALFONSO LYM1702544(E)

Service Sire: YARROW DIAMOND by CRAIG DOUGLAS ALONSO XSR1716124(2)

Service Details: Served 29/09/22

Scanned 1.

979	BRIJON	REW2108183(E2)	Born: 01/03/2021 Inbreeding coefficient: 3.3
<p>Sire: PANT WOLF JLP1501161(1) by LOOSEBEARE UNIQUE Dam: REW1304089(2) by GREY PEEL RAMBO HMF1000004(E) Service Sire: ALWENT FOREMOST by SPORTSMANS BATMAN BGS1803201(E1) Service Details: Served 29/09/22 Scanned 1.</p> <p>This is the first time a female has publicly been offered for sale out of 4089, a ewe that breeds every time.</p>			
980	BRIJON	REW2108273(E1)	Born: 02/03/2021 Inbreeding coefficient: 5.1
<p>Sire: CRAIG DOUGLAS CRACKERJACK XSR1920760(1) by KNOCK BANTASTIC Dam: REW1806344(E2) by MIDLOCK YOURE THE ONE WKM1618058(1) Service Sire: LOOSEBEARE DIGGER by SPORTSMANS BULLETPROOF BGS1803224(1) Service Details: Served 29/09/22 Scanned 2.</p>			
981	BRIJON	REW2108333(2)	Born: 02/03/2021 Inbreeding coefficient: 4.4
<p>Sire: CRAIG DOUGLAS CRACKERJACK XSR1920760(1) by KNOCK BANTASTIC Dam: REW1605349(2) by HAYMOUNT VAVA VOOM AWJ1400747(E) Service Sire: YARROW DIAMOND by CRAIG DOUGLAS ALONSO XSR1716124(2) Service Details: Served 29/09/22 Scanned 2.</p>			
982	BRIJON	REW2108187(E2)	Born: 01/03/2021 Inbreeding coefficient: 28.4
<p>Sire: PANT WOLF JLP1501161(1) by LOOSEBEARE UNIQUE Dam: REW1906994(E2) by PANT WOLF JLP1501161(1) Service Sire: ALWENT FOREMOST by SPORTSMANS BATMAN BGS1803201(E1) Service Details: Served 29/09/22 Scanned 2.</p>			
983	BRIJON	REW2108293(2)	Born: 01/03/2021 Inbreeding coefficient: 4.8
<p>Sire: CRAIG DOUGLAS CRACKERJACK XSR1920760(1) by KNOCK BANTASTIC Dam: REW1806510(1) by MILNBANK ALFONSO LYM1702544(E) Service Sire: YARROW DIAMOND by CRAIG DOUGLAS ALONSO XSR1716124(2) Service Details: Served 29/09/22 Scanned 1.</p>			
984	BRIJON	REW2108209(E2)	Born: 01/03/2021 Inbreeding coefficient: 4.5
<p>Sire: CRAIG DOUGLAS CRACKERJACK XSR1920760(1) by KNOCK BANTASTIC Dam: REW1906955(E2) by PANT WOLF JLP1501161(1) Service Sire: ALWENT FOREMOST by SPORTSMANS BATMAN BGS1803201(E1) Service Details: Served 29/09/22 Scanned 2.</p>			

985	BRIJON	REW2108394(1)	Born: 04/04/2021 Inbreeding coefficient: 4.8
	Sire: DUHONW BACKLASH JMU1806382(2) by STRATHBOGIE YAMAHA Dam: REW1907032(1) by BLAENCAR BRUISER YME1805430(E1) Service Sire: LOOSEBEARE DIGGER by SPORTSMANS BULLETPROOF BGS1803224(1) Service Details: Served 29/09/22 Scanned 2. Twin sister to our Champion at Bulth Wells 2022.		
986	BRIJON	REW2108246(E1)	Born: 01/03/2021 Inbreeding coefficient: 5.1
	Sire: CRAIG DOUGLAS CRACKERJACK XSR1920760(1) by KNOCK BANTASTIC Dam: REW1806344(E2) by MIDLOCK YOURE THE ONE WKM1618058(1) Service Sire: ALWENT FOREMOST by SPORTSMANS BATMAN BGS1803201(E1) Service Details: Served 29/09/22 Scanned 1.		
987	BRIJON	REW2108250(E2)	Born: 01/03/2021 Inbreeding coefficient: 4.3
	Sire: MIDLOCK CAPONE WKM1927275(E2) by KNOCK BANTASTIC Dam: REW1705745(E) by PANT WOLF JLP1501161(1) Service Sire: YARROW DIAMOND by CRAIG DOUGLAS ALONSO XSR1716124(2) Service Details: Served 29/09/22 Scanned 3.		
988	BRIJON	REW2108286(1)	Born: 02/03/2021 Inbreeding coefficient: 4.2
	Sire: DUHONW BACKLASH JMU1806382(2) by STRATHBOGIE YAMAHA Dam: REW1907034(1) by MIDLOCK YOURE THE ONE WKM1618058(1) Service Sire: ALWENT FOREMOST by SPORTSMANS BATMAN BGS1803201(E1) Service Details: Served 29/09/22 Scanned 2.		
989	BRIJON	REW2108206(E2)	Born: 01/03/2021 Inbreeding coefficient: 4.0
	Sire: PANT WOLF JLP1501161(1) by LOOSEBEARE UNIQUE Dam: REW1605148(E) by BRACKENRIDGE STRONGBOW NAB1100063(E) Service Sire: YARROW DIAMOND by CRAIG DOUGLAS ALONSO XSR1716124(2) Service Details: Served 29/09/22 Scanned 3. Full brothers have sold to 2800gns		
990	BRIJON	REW2108195(E2)	Born: 01/03/2021 Inbreeding coefficient: 4.3
	Sire: MIDLOCK YOURE THE ONE WKM1618058(1) by MIDLOCK WILSON Dam: REW1605148(E) by BRACKENRIDGE STRONGBOW NAB1100063(E) Service Sire: ALWENT FOREMOST by SPORTSMANS BATMAN BGS1803201(E1) Service Details: Served 29/09/22 Scanned 1.		

991	BRIJON	REW2108259(E1)	Born: 01/03/2021 Inbreeding coefficient: 5.1
	Sire: CRAIG DOUGLAS CRACKERJACK XSR1920760(1) by KNOCK BANTASTIC Dam: REW1605191(E) by BRACKENRIDGE STRONGBOW NAB1100063(E) Service Sire: YARROW DIAMOND by CRAIG DOUGLAS ALONSO XSR1716124(2) Service Details: Served 29/09/22 Scanned 2. Dam also bred Chieftain and Captain Jack.		
992	BRIJON	REW2108340(2)	Born: 02/03/2021 Inbreeding coefficient: 4.8
	Sire: PANT WOLF JLP1501161(1) by LOOSEBEARE UNIQUE Dam: REW1504725(2) by BRACKENRIDGE STRONGBOW NAB1100063(E) Service Sire: LOOSEBEARE DIGGER by SPORTSMANS BULLETPROOF BGS1803224(1) Service Details: Served 29/09/22 Scanned 2.		
993	BRIJON	REW2108257(E2)	Born: 01/03/2021 Inbreeding coefficient: 5.3
	Sire: MIDLOCK CAPONE WKM1927275(E2) by KNOCK BANTASTIC Dam: REW1906958(E2) by MIDLOCK YOURE THE ONE WKM1618058(1) Service Sire: LOOSEBEARE DIGGER by SPORTSMANS BULLETPROOF BGS1803224(1) Service Details: Served 29/09/22 Scanned 2.		
994	BRIJON	REW2108181(E2)	Born: 01/03/2021 Inbreeding coefficient: 4.3
	Sire: CRAIG DOUGLAS CRACKERJACK XSR1920760(1) by KNOCK BANTASTIC Dam: REW1806363(2) by MIDLOCK YOURE THE ONE WKM1618058(1) Service Sire: ALWENT FOREMOST by SPORTSMANS BATMAN BGS1803201(E1) Service Details: Served 16/10/22		

Service Sires**LOOSEBEARE DIGGER****QEL2010882(2)****Born: 21/02/2020****Inbreeding coefficient: 4.1****Sire:** SPORTSMANS BULLETPROOF BGS1803224(1) by FORDAFOURIE AMALERT**Dam:** QEL1707813(2) by HOLLYFORD VROOM VROOM DHA1400268(2)**LOOSEBEARE DIGGER****YARROW DIAMOND****DWY2028086(2)****Born: 15/03/2020****Inbreeding coefficient: 4.9****Sire:** CRAIG DOUGLAS ALONSO XSR1716124(2) by HADDO WHISKY GALORE**Dam:** DWY1720102(2) by YARROW YAZZA DWY1617940(3)**YARROW DIAMOND****ALWENT FOREMOST****NTA2201868(E1)****Born: 24/02/2022****Inbreeding coefficient: 7.7****Sire:** SPORTSMANS BATMAN BGS1803201(E1) by GARNGOUR ALABAMA**Dam:** NTA1901549(E1) by SPORTSMANS TREMENDOUS II BGS1200471(E)



ONLINE BIDDING NOW AVAILABLE

Simply Download the **MartEye App** from your phone App Store & Register.
Then press the **JOIN** button on the Harrison and Hetherington page.



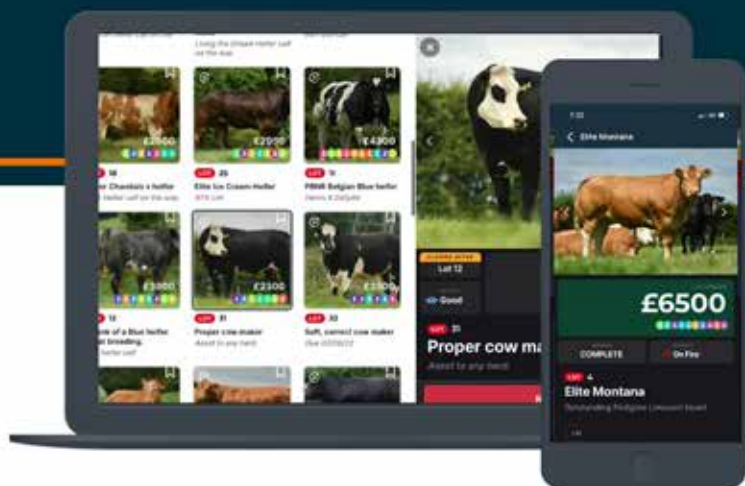
Download on the
App Store



GET IT ON
Google Play

ALSO AVAILABLE ON WEBSITE:

handh.marteye.ie



MartEye

Without doubt the best group of gimmers we have sold from the flock. They are genuine stock gimmers. At Kelso customers have sold shearling rams bred from our sale gimmers for £6000 and £4500 respectively.

The sires that we have used in recent years have been amongst the highest performers in the UK as well as some of the top selling rams to be sold in public auction. The aim of the flock is to breed sheep that are born easily, grow quickly and leave maximum return to their purchasers.

The gimmers are on the Heptavac P system and have been vaccinated with Cevac and Toxovac.

995 ROXBURGH EJR2104954(1) Born: 01/03/2021
Inbreeding coefficient: 4.4

Sire: WALSTON CLANSMAN OJT1914118(2) by BLACKADDER ALBERTZ

Dam: EJR1904248(1) by HADD0 BALVENIE KWW1801583(E1)

	Litter Sz	8 Wk Wgt	Maternal	Scan Wgt	Musc Depth	Fat Depth	CT Gigot Musc	Index	Ranking
EBV	0.05	3.09kgs	0.47kgs	8.17kgs	-0.95mm	-0.74mm	0.36mm	211	TOP 25%
Accuracy	65%	69%	69%	77%	75%	77%	14%	72%	

Service Sire: FIMBER ELYSIUM by RUGLEY BONZO JER1808245(1)

Service Details: Ran from 26/09/22 to 10/11/22. Scanned 2.



LOT 995

996 ROXBURGH EJR2104813(2) Born: 22/02/2021
Inbreeding coefficient: 5.3

Sire: ROXBURGH DIRRINGTON EJR2004403(E1) by CANLLEFAES BRIGHT SPARK

Dam: EJR1803592(E2) by MIDLOCK YOURE THE ONE WKM1618058(1)

	Litter Sz	8 Wk Wgt	Maternal	Scan Wgt	Musc Depth	Fat Depth	CT Gigot Musc	Index	Ranking
EBV	0.04	1.85kgs	0.45kgs	5.37kgs	0.47mm	-0.74mm	-0.03mm	197	TOP 25%
Accuracy	61%	68%	68%	77%	75%	77%	14%	71%	

Service Sire: WALSTON CLANSMAN by BLACKADDER ALBERTZ HNQ1701402(2)

Service Details: Ran from 26/09/22 to 10/11/22. Scanned 3.

997 ROXBURGH EJR2104845(2) Born: 23/02/2021
Inbreeding coefficient: 4.3
Sire: ROXBURGH DIRRINGTON EJR2004403(E1) by CANLLEFAES BRIGHT SPARK
Dam: EJR1904328(2) by HAYMOUNT ARNOTT AWJ1701288(E)

	Litter Sz	8 Wk Wgt	Maternal	Scan Wgt	Musc Depth	Fat Depth	CT Gigot Musc	Index
EBV	0.12	2.13kgs	0.42kgs	5.55kgs	-0.75mm	-0.49mm	0.34mm	173
Accuracy	61%	67%	67%	76%	75%	77%	16%	71%

Service Sire: WALSTON CLANSMAN by BLACKADDER ALBERTZ HNQ1701402(2)

Service Details: Ran from 26/09/22 to 10/11/22. Scanned 3.

998 ROXBURGH EJR2104850(2) Born: 24/02/2021
Inbreeding coefficient: 3.1
Sire: WALSTON CLANSMAN OJT1914118(2) by BLACKADDER ALBERTZ
Dam: EJR1803710(1) by VORN YARDSTICK VJV1600774(1)

	Litter Sz	8 Wk Wgt	Maternal	Scan Wgt	Musc Depth	Fat Depth	CT Gigot Musc	Index
EBV	0.05	2.61kgs	0.24kgs	6.79kgs	-0.54mm	-0.63mm	0.08mm	193
Accuracy	65%	69%	69%	77%	76%	77%	19%	72%

Service Sire: EMPIRE DR FEELGOOD by DOUGANHILL BLACKJACK GCK1811104(1)

Service Details: Ran from 26/09/22 to 10/11/22. Scanning results at time of sale.

999 ROXBURGH EJR2104854(1) Born: 24/02/2021
Inbreeding coefficient: 4.1
Sire: ROXBURGH DIRRINGTON EJR2004403(E1) by CANLLEFAES BRIGHT SPARK
Dam: EJR1904132(2) by HAYMOUNT ARNOTT AWJ1701288(E)

	Litter Sz	8 Wk Wgt	Maternal	Scan Wgt	Musc Depth	Fat Depth	CT Gigot Musc	Index	Ranking
EBV	0.02	2.44kgs	0.21kgs	6.47kgs	-0.03mm	-0.89mm	0.33mm	203	TOP 25%
Accuracy	61%	67%	67%	76%	74%	76%	16%	70%	

Service Sire: WALSTON CLANSMAN by BLACKADDER ALBERTZ HNQ1701402(2)

Service Details: Ran from 26/09/22 to 10/11/22. Scanned 2.

THE UK'S LEADING LIVESTOCK MARKETING COMPANY



- EIGHT SALE CENTRES
- PEDIGREE & COMMERCIAL LIVESTOCK
- OFFICIAL SOCIETY SALES OF BEEF, DAIRY & SHEEP
- TRACTORS, MACHINERY & COMMERCIAL VEHICLES
- SPECIALIST LIVESTOCK SALES, EQUINE & EVENTS
- PROFESSIONAL VALUATIONS
- ONLINE INTERNET BIDDING



01228 406200

harrisonandhetherington.co.uk

BORDERWAY MART, CARLISLE, CUMBRIA CA1 2RS

1000 ROXBURGH EJR2104900(1) Born: 26/02/2021
Inbreeding coefficient: 4.5
Sire: WALSTON CLANSMAN OJT1914118(2) by BLACKADDER ALBERTZ
Dam: EJR1703144(1) by DOUGANHILL MONARCH GCK06084(2)

	Litter Sz	8 Wk Wgt	Maternal	Scan Wgt	Musc Depth	Fat Depth	CT Gigot Musc	Index
EBV	0.07	1.51kgs	0.26kgs	4.04kgs	0.19mm	0.50mm	0.43mm	195
Accuracy	65%	69%	69%	78%	76%	77%	19%	72%

Service Sire: FIMBER ELYSIUM by RUGLEY BONZO JER1808245(1)

Service Details: Ran from 26/09/22 to 10/11/22. Scanned 1.

1001 ROXBURGH EJR2104889(3) Born: 25/02/2021
Inbreeding coefficient: 3.1
Sire: WALSTON CLANSMAN OJT1914118(2) by BLACKADDER ALBERTZ
Dam: EJR1703429(3) by ROXBURGH YORKIE EJR1603084(3)

	Litter Sz	8 Wk Wgt	Maternal	Scan Wgt	Musc Depth	Fat Depth	CT Gigot Musc	Index	Ranking
EBV	0.12	1.93kgs	1.20kgs	4.75kgs	0.85mm	0.19mm	-0.21mm	216	TOP 25%
Accuracy	65%	70%	70%	78%	76%	78%	14%	73%	

Service Sire: FIMBER ELYSIUM by RUGLEY BONZO JER1808245(1)

Service Details: Ran from 26/09/22 to 10/11/22. Scanned 1.



LOT 1001

1002**ROXBURGH****EJR2104962(3)****Born: 01/03/2021****Inbreeding coefficient: 3.6****Sire:** WALSTON CLANSMAN OJT1914118(2) by BLACKADDER ALBERTZ**Dam:** EJ1602978(2) by BRIJON VALHALLA REW1404357(1)

	Litter Sz	8 Wk Wgt	Maternal	Scan Wgt	Musc Depth	Fat Depth	CT Gigot Musc	Index	Ranking
EBV	0.14	2.60kgs	0.07kgs	7.08kgs	0.81mm	-0.07mm	-0.06mm	254	TOP 5%
Accuracy	66%	71%	71%	78%	76%	78%	16%	73%	

Service Sire: FIMBER ELYSIUM by RUGLEY BONZO JER1808245(1)**Service Details:** Ran from 26/09/22 to 10/11/22. Scanned 2.**LOT 1002****1003****ROXBURGH****EJR2105011(1)****Born: 03/03/2021****Inbreeding coefficient: 3.4****Sire:** MIDLOCK YOURE THE ONE WKM1618058(1) by MIDLOCK WILSON**Dam:** EJ1602957(1) by KIMBOLTON VA VA VOOM PPK1400385(E)

	Litter Sz	8 Wk Wgt	Maternal	Scan Wgt	Musc Depth	Fat Depth	CT Gigot Musc	Index	Ranking
EBV	0.02	1.99kgs	0.99kgs	5.81kgs	1.12mm	-0.47mm	-0.17mm	228	TOP 10%
Accuracy	69%	70%	70%	78%	76%	78%	26%	73%	

Service Sire: WALSTON CLANSMAN by BLACKADDER ALBERTZ HNQ1701402(2)**Service Details:** Ran from 26/09/22 to 10/11/22. Scanned 2.**1004****ROXBURGH****EJR2105068(2)****Born: 05/03/2021****Inbreeding coefficient: 3.9****Sire:** ROXBURGH DIRRINGTON EJ2004403(E1) by CANLLEFAES BRIGHT SPARK**Dam:** EJ1803525(2) by MIDLOCK YOURE THE ONE WKM1618058(1)

	Litter Sz	8 Wk Wgt	Maternal	Scan Wgt	Musc Depth	Fat Depth	CT Gigot Musc	Index	Ranking
EBV	0.11	2.68kgs	0.68kgs	7.36kgs	0.60mm	-0.72mm	-0.22mm	237	TOP 10%
Accuracy	61%	68%	68%	77%	75%	77%	15%	71%	

Service Sire: WALSTON CLANSMAN by BLACKADDER ALBERTZ HNQ1701402(2)**Service Details:** Ran from 26/09/22 to 10/11/22. Scanned 2.

1005 ROXBURGH EJR2105069(1) Born: 06/03/2021
Inbreeding coefficient: 4.1
Sire: WALSTON CLANSMAN OJT1914118(2) by BLACKADDER ALBERTZ
Dam: EJR1703140(2) by DOUGANHILL MONARCH GCK06084(2)

	Litter Sz	8 Wk Wgt	Maternal	Scan Wgt	Musc Depth	Fat Depth	CT Gigot Musc	Index	Ranking
EBV	0.04	2.01kgs	0.29kgs	5.22kgs	-0.16mm	0.51mm	0.33mm	205	TOP 25%
Accuracy	66%	70%	70%	78%	76%	78%	20%	73%	

Service Sire: FIMBER ELYSIUM by RUGLEY BONZO JER1808245(1)

Service Details: Ran from 26/09/22 to 10/11/22. Scanned 1.

1006 ROXBURGH EJR2105073(1) Born: 06/03/2021
Inbreeding coefficient: 4.3

Sire: MIDLOCK YOURE THE ONE WKM1618058(1) by MIDLOCK WILSON
Dam: EJR1803706(2) by VORN YARDSTICK VJV1600774(1)

	Litter Sz	8 Wk Wgt	Maternal	Scan Wgt	Musc Depth	Fat Depth	CT Gigot Musc	Index	Ranking
EBV	0.02	1.65kgs	0.97kgs	5.27kgs	1.17mm	-0.47mm	-0.14mm	208	TOP 25%
Accuracy	68%	70%	70%	78%	76%	78%	20%	73%	

Service Sire: WALSTON CLANSMAN by BLACKADDER ALBERTZ HNQ1701402(2)

Service Details: Ran from 26/09/22 to 10/11/22. Scanned 2.

1007 ROXBURGH EJR2105127(1) Born: 09/03/2021
Inbreeding coefficient: 3.0

Sire: MIDLOCK YOURE THE ONE WKM1618058(1) by MIDLOCK WILSON
Dam: EJR1803622(2) by VORN YARDSTICK VJV1600774(1)

	Litter Sz	8 Wk Wgt	Maternal	Scan Wgt	Musc Depth	Fat Depth	CT Gigot Musc	Index	Ranking
EBV	0.01	3.12kgs	1.01kgs	9.11kgs	0.23mm	-0.11mm	-0.25mm	259	TOP 5%
Accuracy	66%	69%	69%	77%	75%	77%	20%	72%	

Service Sire: WALSTON CLANSMAN by BLACKADDER ALBERTZ HNQ1701402(2)

Service Details: Ran from 26/09/22 to 10/11/22. Scanned 2.

1008 ROXBURGH EJR2105160(1) Born: 12/03/2021
Inbreeding coefficient: 4.1

Sire: GREENARCH BODACIOUS HEV1806755(2) by CRAIG FARM WIZARD
Dam: EJR1602879(2) by BRIJON VALHALLA REW1404357(1)

	Litter Sz	8 Wk Wgt	Maternal	Scan Wgt	Musc Depth	Fat Depth	CT Gigot Musc	Index	Ranking
EBV	0.02	2.93kgs	0.07kgs	8.04kgs	0.19mm	0.01mm	0.40mm	254	TOP 5%
Accuracy	66%	69%	69%	77%	75%	77%	27%	72%	

Service Sire: WALSTON CLANSMAN by BLACKADDER ALBERTZ HNQ1701402(2)

Service Details: Ran from 26/09/22 to 10/11/22. Scanned 2.

Service Sires**WALSTON CLANSMAN****OJT1914118(2)****Born: 21/03/2019****Scrapie genotype: ARR/ARR****Inbreeding coefficient: 3.9****Sire:** BLACKADDER ALBERTZ HNQ1701402(2) by WOLFCLYDE WAWRINKA**Dam:** OJT1710943(2) by SCROGTONHEAD YER MAN GLH1609028(1)

	Litter Sz	8 Wk Wgt	Maternal	Scan Wgt	Musc Depth	Fat Depth	CT Gigot Musc	Index
EBV	0.06	1.80kgs	-0.01kgs	4.63kgs	-0.43mm	-0.13mm	0.23mm	165
Accuracy	90%	96%	96%	98%	98%	98%	10%	97%

FIMBER ELYSIUM**LJF2100759(1)****Born: 10/03/2021****Inbreeding coefficient: 3.3****Sire:** RUGLEY BONZO JER1808245(1) by CAMBWELL TRADEMARK**Dam:** LJF1700548(1) by ETTRICK TARTAN SPECIAL GGH1202028(E)

	Litter Sz	8 Wk Wgt	Maternal	Scan Wgt	Musc Depth	Fat Depth	CT Gigot Musc	Index	Ranking
EBV	0.06	4.29kgs	0.73kgs	10.72kgs	0.91mm	0.05mm	1.39mm	337	TOP 1%
Accuracy	66%	69%	69%	77%	74%	76%	41%	72%	

EMPIRE DR FEELGOOD**WPU2022230(1)****Born: 26/03/2020****Scrapie genotype: ARR/ARR****Inbreeding coefficient: 4.6****Sire:** DOUGANHILL BLACKJACK GCK1811104(1) by KNOCK YARDSMAN**Dam:** WPU1714628(2) by BLACKADDER WELL HUNG HNQ1501040(2)

	Litter Sz	8 Wk Wgt	Maternal	Scan Wgt	Musc Depth	Fat Depth	CT Gigot Musc	Index
EBV	0.11	1.75kgs	0.09kgs	4.73kgs	-0.34mm	-0.38mm	0.25mm	163
Accuracy	63%	74%	74%	83%	82%	83%	16%	78%

Reference to Sires:

Midlock You're the One - Kelso high seller £23,000

22,000gns Roxburgh Durrington - Sold to Logie Durno

**MIDLOCK YOU'RE THE ONE****ROXBURGH DIRRINGTON**

JOHN ELLIOT**MERSHOTT****BOK**

Without doubt the best group of gimmers we have sold from the flock. They are genuine stock gimmers. At Kelso customers have sold shearling rams bred from our sale gimmers for £6000 and £4500 respectively.

The sires that we have used in recent years have been amongst the highest performers in the UK as well as some of the top selling rams to be sold in public auction. The aim of the flock is to breed sheep that are born easily, grow quickly and leave maximum return to their purchasers.

The gimmers are on the Heptavac P system and have been vaccinated with Cevac and Toxovac.

1009 MERSHOTT BOK2107120(2) Born: 03/03/2021

Inbreeding coefficient: 4.2

Sire: CANLLEFAES BRIGHT SPARK DWC1801676(1) by TALCOED YOU KNOW

Dam: BOK1906895(1) by CLINTERTY YUGA KHAN BBY1601056(E)

	Litter Sz	8 Wk Wgt	Maternal	Scan Wgt	Musc Depth	Fat Depth	CT Gigot Musc	Index
EBV	0.15	1.89kgs	0.28kgs	4.83kgs	-0.96mm	-0.44mm	0.29mm	150
Accuracy	66%	69%	69%	77%	75%	77%	22%	72%

Service Sire: WALSTON CLANSMAN by BLACKADDER ALBERTZ HNQ1701402(2)

Service Details: Ran from 26/09/22 to 10/11/22. Scanned 2.

1010 MERSHOTT BOK2107077(2) Born: 25/02/2021

Inbreeding coefficient: 3.5

Sire: CANLLEFAES BRIGHT SPARK DWC1801676(1) by TALCOED YOU KNOW

Dam: JER1707252(1) by HIGHTECS YORICK PSH1601291(3)

	Litter Sz	8 Wk Wgt	Maternal	Scan Wgt	Musc Depth	Fat Depth	CT Gigot Musc	Index	Ranking
EBV	0.14	2.15kgs	0.46kgs	5.09kgs	0.43mm	-0.12mm	0.78mm	209	TOP 25%
Accuracy	67%	69%	69%	77%	76%	77%	25%	72%	

Service Sire: WALSTON CLANSMAN by BLACKADDER ALBERTZ HNQ1701402(2)

Service Details: Ran from 26/09/22 to 10/11/22. Scanned 2.

1011 MERSHOTT BOK2107078(1) Born: 25/02/2021

Inbreeding coefficient: 3.6

Sire: CANLLEFAES BRIGHT SPARK DWC1801676(1) by TALCOED YOU KNOW

Dam: BOK1806834(2) by VORN YARDSTICK VJV1600774(1)

	Litter Sz	8 Wk Wgt	Maternal	Scan Wgt	Musc Depth	Fat Depth	CT Gigot Musc	Index
EBV	0.07	1.59kgs	0.21kgs	3.94kgs	1.19mm	0.10mm	0.08mm	192
Accuracy	67%	69%	69%	77%	75%	77%	17%	72%

Service Sire: WALSTON CLANSMAN by BLACKADDER ALBERTZ HNQ1701402(2)

Service Details: Ran from 26/09/22 to 10/11/22. Scanned 2.

1012 MERSHOTT BOK2107088(1) Born: 27/02/2021

Inbreeding coefficient: 4.2

Sire: CANLLEFAES BRIGHT SPARK DWC1801676(1) by TALCOED YOU KNOW

Dam: BOK1906853(2) by HAYMOUNT ARNOTT AWJ1701288(E)

	Litter Sz	8 Wk Wgt	Maternal	Scan Wgt	Musc Depth	Fat Depth	CT Gigot Musc	Index
EBV	0.11	2.30kgs	0.63kgs	5.75kgs	-0.95mm	-0.28mm	0.12mm	168
Accuracy	66%	69%	69%	77%	75%	77%	16%	72%

Service Sire: WALSTON CLANSMAN by BLACKADDER ALBERTZ HNQ1701402(2)

Service Details: Ran from 26/09/22 to 10/11/22. Scanned 3.

1013 MERSHOTT BOK2107095(2) Born: 28/02/2021
Inbreeding coefficient: 3.1

Sire: CANLLEFAES BRIGHT SPARK DWC1801676(1) by TALCOED YOU KNOW

Dam: BOK1806819(1) by VORN YARDSTICK VJV1600774(1)

	Litter Sz	8 Wk Wgt	Maternal	Scan Wgt	Musc Depth	Fat Depth	CT Gigot Musc	Index	Ranking
EBV	0.12	3.10kgs	0.09kgs	8.05kgs	0.03mm	-0.38mm	-0.04mm	229	TOP 10%
Accuracy	67%	69%	69%	77%	75%	77%	19%	72%	

Service Sire: WALSTON CLANSMAN by BLACKADDER ALBERTZ HNQ1701402(2)

Service Details: Ran from 26/09/22 to 10/11/22. Scanned 2.

1014 MERSHOTT BOK2107100(E2) Born: 01/03/2021
Inbreeding coefficient: 2.8

Sire: GREENARCH BODACIOUS HEV1806755(2) by CRAIG FARM WIZARD

Dam: EJ1502538(2) by CAEREINION THOR PEC1200169(3)

	Litter Sz	8 Wk Wgt	Maternal	Scan Wgt	Musc Depth	Fat Depth	CT Gigot Musc	Index	Ranking
EBV	0.16	3.08kgs	0.24kgs	8.33kgs	0.03mm	-0.75mm	0.14mm	237	TOP 10%
Accuracy	67%	71%	71%	78%	76%	78%	29%	74%	

Service Sire: WALSTON CLANSMAN by BLACKADDER ALBERTZ HNQ1701402(2)

Service Details: Ran from 26/09/22 to 10/11/22. Scanned 2.

1015 MERSHOTT BOK2107149(2) Born: 22/03/2021
Inbreeding coefficient: 8.1

Sire: RUGLEY BEST EVER JER1808244(E1) by HADDO AMIGO

Dam: BOK1906899(1) by HAYMOUNT ARNOTT AWJ1701288(E)

	Litter Sz	8 Wk Wgt	Maternal	Scan Wgt	Musc Depth	Fat Depth	CT Gigot Musc	Index
EBV	0.09	2.48kgs	0.61kgs	6.14kgs	-0.46mm	-0.50mm	0.64mm	181
Accuracy	64%	63%	63%	68%	74%	76%	39%	66%

Service Sire: WALSTON CLANSMAN by BLACKADDER ALBERTZ HNQ1701402(2)

Service Details: Ran from 26/09/22 to 10/11/22. Scanned 3.

Service Sires

WALSTON CLANSMAN OJT1914118(2) Born: 21/03/2019
 Scrapie genotype: ARR/ARR Inbreeding coefficient: 3.9

Sire: BLACKADDER ALBERTZ HNQ1701402(2) by WOLFCLYDE WAWRINKA

Dam: OJT1710943(2) by SCROGTONHEAD YER MAN GLH1609028(1)

	Litter Sz	8 Wk Wgt	Maternal	Scan Wgt	Musc Depth	Fat Depth	CT Gigot Musc	Index
EBV	0.06	1.80kgs	-0.01kgs	4.63kgs	-0.43mm	-0.13mm	0.23mm	165
Accuracy	90%	96%	96%	98%	98%	98%	10%	97%

W JACK ARNOTT		HAYMOUNT	AWJ
1016	HAYMOUNT	AWJ2102639(2)	Born: 30/03/2021 Inbreeding coefficient: 5.2
	Sire: DOUGANHILL CRACKPOT GCK1912100(E1) by GLENSIDE KING II		
	Dam: AWJ1801427(0) by CLINTERTY YUGA KHAN BBY1601056(E)		
	Service Sire: RHAEADR ENTREPRENEUR by SPORTSMANS DARE DEVIL BGS2004557(E2)		
	Service Details: AI'd 07/10/2022		
1017	HAYMOUNT	AWJ2102649(2)	Born: 19/04/2021 Inbreeding coefficient: 5.2
	Sire: GRANITE BAY CITY ROLLER IGM1823139(1) by ELMSCLEUGH ASSASSIN		
	Dam: AWJ1701320(2) by CLINTERTY YUGA KHAN BBY1601056(E)		
	Service Sire: RHAEADR ENTREPRENEUR by SPORTSMANS DARE DEVIL BGS2004557(E2)		
	Service Details: AI'd 07/10/2022		
1018	HAYMOUNT	AWJ2102646(4)	Born: 17/04/2021
	Sire: CLAYBURY DELIVERANCE DHL2001599(1) by STRATHBOGIE CANNONBALL		
	Dam: AWJ1901789(E1) by GARNGOUR AMBASSADOR CJN1704914(E)		
	Service Sire: RHAEADR ENTREPRENEUR by SPORTSMANS DARE DEVIL BGS2004557(E2)		
	Service Details: AI'd 07/10/2022		
1019	HAYMOUNT	AWJ2102613(2)	Born: 25/03/2021 Inbreeding coefficient: 5.8
	Sire: DOUGANHILL CRACKPOT GCK1912100(E1) by GLENSIDE KING II		
	Dam: AWJ1701233(1) by CLINTERTY YUGA KHAN BBY1601056(E)		
	Service Sire: RHAEADR ENTREPRENEUR by SPORTSMANS DARE DEVIL BGS2004557(E2)		
	Service Details: AI'd 07/10/2022		
1020	HAYMOUNT	AWJ2102582(2)	Born: 11/03/2021 Inbreeding coefficient: 6.0
	Sire: HAYMOUNT CRACKERJACK AWJ1901777(E1) by PLASUCHA BOSS MAN		
	Dam: AWJ1801382(0) by MILNBANK AWESOME LYM1702542(E)		
	Service Sire: RHAEADR ENTREPRENEUR by SPORTSMANS DARE DEVIL BGS2004557(E2)		
	Service Details: AI'd 07/10/2022		
1021	HAYMOUNT	AWJ2102658(2)	Born: 21/04/2021 Inbreeding coefficient: 6.3
	Sire: CLAYBURY DELIVERANCE DHL2001599(1) by STRATHBOGIE CANNONBALL		
	Dam: AWJ1901785(E1) by PLASUCHA BOSS MAN BFE1808061(E)		
	Service Sire: RHAEADR ENTREPRENEUR by SPORTSMANS DARE DEVIL BGS2004557(E2)		
	Service Details: AI'd 07/10/2022		
1022	HAYMOUNT	AWJ2102563(3)	Born: 11/03/2021 Inbreeding coefficient: 6.0
	Sire: HAYMOUNT CRACKERJACK AWJ1901777(E1) by PLASUCHA BOSS MAN		
	Dam: AWJ1801497(0) by MILNBANK AWESOME LYM1702542(E)		
	Service Sire: RHAEADR ENTREPRENEUR by SPORTSMANS DARE DEVIL BGS2004557(E2)		
	Service Details: AI'd 07/10/2022		

1023 HAYMOUNT AWJ2102421(E2) Born: 10/03/2021
Inbreeding coefficient: 6.3
Sire: SPORTSMANS DIRTY HARRY BGS2004590(E1) by GARNGOUR CRAFTSMAN
Dam: AWJ1901764(E1) by PLASUCHA BOSS MAN BFE1808061(E1)
Service Sire: HAYMOUNT FANTASTIC by RHAEDR ENTREPRENEUR ENM2102464(E1)
Service Details: Served 24/10/2022

Service Sires

RHAEDR ENTREPRENEUR ENM2102464(E1) Born: 06/02/2021
Inbreeding coefficient: 8.8
Sire: SPORTSMANS DARE DEVIL BGS2004557(E2) by GARNGOUR CRAFTSMAN
Dam: ENM1801990(E1) by TEIGLUM YOUNGGUN CFT1604569(E)

Sire of the Year 2022. Purchased 24,000gns with the Hexel flock.
 Sons sold 130,000gns, 70,000gns, 32,000gns, 28,000gns, 15,000gns, 14,000gns.
 Full brother sold for 160,000gs.



RHAEDR ENTREPRENEUR

HAYMOUNT FANTASTIC AWJ2202796(E1) Born: 01/03/2022
Inbreeding coefficient: 6.3
Sire: RHAEDR ENTREPRENEUR ENM2102464(E1) by SPORTSMANS DARE DEVIL
Dam: AWJ1701284(E) by CLINTERTY YUGA KHAN BBY1601056(E)
Service Details: HAYMOUNT FANTASTIC by RHAEDR ENTERPRENEUR

Brother to Crackerjack and 32,000gn King. Dam's sisters bred 130,000gn Fan Dabi Dozi and dam of 70,000gn First Class.



EXCLUSIVE
to
H&H

H&H *Distinction*

FARM COMPLETE

Designed by *Farm Insurance Experts*,
for Farming Experts

Talk to us today to discover how you
can benefit from our *exclusive* cover

Underwritten by



AVIVA



01228 406290
distinction@hhib.co.uk
hhinsurancebrokers.co.uk



**Insurance
Brokers**
Your Trusted Advisors

ASSET FINANCE | INVESTMENTS | RISK MANAGEMENT

HEALTH AND SAFETY RULES HARRISON & HETHERINGTON LIMITED NOTICE TO ALL VISITORS AND TRADERS PLEASE READ AND OBSERVE THE FOLLOWING

All visitors and traders on site will be responsible for ensuring that they and their employees or sub-contractors engaged by them comply with all legal requirements, including the Health and Safety At Work etc., Act 1974, The Management of Health and Safety At Work Regulations, The Provision And Use of Work Equipment Regulations, etc.

All visitors and traders will be responsible for ensuring that their operations in no way affect the integrity of the company or its fire, safety or security arrangements and in no way compromise the health and safety and welfare of other visitors to and or employees of Harrison & Hetherington.

Although it is the visitors and traders responsibility to ensure that plant, equipment and systems in work are safe, Harrison & Hetherington Limited reserve the right to ask any visitor or trader to leave the market for any breaches in the Health and Safety Rules and/or Regulations.

Vendors must inform Harrison & Hetherington Limited of any livestock due to attend the market whose temperament, behaviour or condition may call for additional precautions for its safe handling.

When loading or unloading livestock handlers must ensure that the dock and vehicle gates are securely fixed so as to prevent the escape of animals.

Traders are responsible for providing and maintaining suitable livestock handling equipment. They should ensure that livestock handlers are fit, experienced in livestock handling and familiar with the livestock in their charge.

Children must not be permitted in any area where they may be at risk from livestock or machinery.

In the case of bulls, during the period when the show/sale is open to visitors, bulls in stalls or pens should not be left unattended. If the handler is temporarily absent, arrangements should be made with another vendor, steward or member of Harrison & Hetherington staff to oversee the bull until the handler returns.

Handling of Livestock at shows and sales: Harrison & Hetherington Limited recommend that an adult person should accompany any junior person during the showing/sale of livestock in the ring and reserves the right to intervene at any point if, in the company's opinion, the person showing the livestock is at risk in undertaking that activity.

Passageways must be kept clear at all times during the auction sale. **PLEASE DO NOT STAND IN THE SALE RING ENTRANCE AND EXIT PASSAGES.**

The auction ring man escapes and refuges must be kept clear at all times.

All portable electrical equipment supplied and/or used by visitors and traders must be safe and fit for the purpose and should have a valid portable appliance test certificate.

AUCTIONEER'S TERMS & CONDITIONS OF SALE

(Incorporating the Auctioneer's
Terms and Conditions)

1. The biddings to be regulated by the Auctioneers and the highest bidder, subject to the Vendor's reserve (if any), to be the purchaser. No bid shall be retracted and if any dispute should arise between two or more bidders, the Lot in dispute to be put up again and resold, or the Auctioneers may determine the dispute at their own discretion and their decision shall be final. The Auctioneers reserve the right to refuse the bid of any person without being called upon to give reason for such action.
2. The Purchaser to give his full name and dwelling place and pay for all Lots purchased immediately at the close of sale. No Lot or Lots shall be removed from the sale premises until paid for and a pass-out slip obtained from the Auctioneer's clerk but each and every Lot shall immediately at the fall of the hammer be considered as delivered and be and remain in every respect at the absolute risk and expense of the respective purchaser or purchasers thereof and shall be removed from the sale premises at the purchaser's expense. The right of property shall not pass until the full purchase price is paid.
3. Purchasers paying by cheque must be prepared, if required, to produce a banker's reference. As a result of the Money Laundering Regulations (2003) the auctioneers are unable to accept cash payments in excess of nine thousand pounds sterling for any single or linked purchase transaction.
4. All statements in the catalogue, or made by the Auctioneers at the time of sale, also the correct identification of the animals, are the entire responsibility of the Vendors. The Auctioneers take no personal responsibility for the correctness of such statements or identities.
5. All statements in the catalogue, or any made by the Auctioneers at the time of sale relating to any veterinary or other tests are to be taken as statements of fact only. No such statements shall guarantee the purchaser of any animal against loss arising from the subsequent reaction of such animal to any test administered after the sale and the Vendors shall not be liable in any way should this occur.
6. All stock is sold subject to the Conditions of Sale recommended for use at markets by the Livestock Auctioneers' Markets Committee for England and Wales except in so far as these conflict with any Special Conditions applicable to the sale of pedigree stock, when the latter Conditions shall prevail.
7. Neither the Vendors nor the Auctioneers will be responsible for any accident or injury to persons or property, through fire or any other cause whatsoever, nor for any damage by animals prior to, during or after the sale.
8. No undertaking by the Auctioneers or their servants to take charge of any Lot or Lots after the sale or to forward them to their destination shall be held to impose upon the Auctioneers any legal obligation or vitiate any of these Conditions.
9. Inasmuch as the Auctioneers act as agents for a disclosed principal they shall not be considered personally responsible for any default on the part of either purchasers or Vendors and the remedy shall be against them only and not against the Auctioneers.
10. If these conditions are unfulfilled, the Vendors or Auctioneers shall have the power to resell the Lots, retaining any surplus and charging any deficiency and expense to the defaulter.
11. You have a right to know how we will use the information you have provided to us. We may share the information with other members of our group and may make this information available to relevant media groups and other interested parties on request. We and other members of the group may contact you by telephone, e-mail, post or fax to inform you of products or services available. If you do not want to be contacted for marketing purposes or do not wish your information to be made available to any other parties please notify us in writing.

HARRISON & HETHERINGTON LTD



Ram
Fertility
Testing

Semen
Collection
and
Freezing

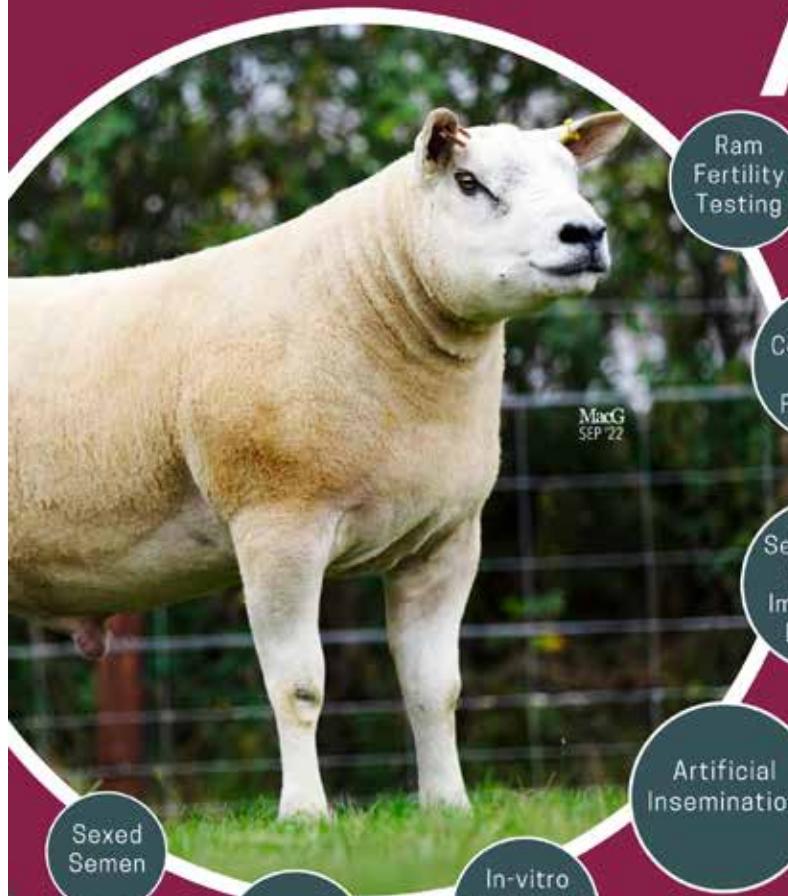
Semen and
Embryo
Import and
Exports

Artificial
Insemination

In-vitro
Production
(IVP)

Embryo
Transfer

Sexed
Semen



MacG
SEP '22

AB Europe are delighted
to be supporting the
Kelso Crackers Sale 2022!

Best of luck to all our clients!



www.abreeds.co.uk



enquiries@abreeds.co.uk



Edinburgh 01875 614 500 | Malvern 01531 651 210 | Belfast 07967 764 132

THE UK'S LEADING LIVESTOCK MARKETING COMPANY

- EIGHT SALE CENTRES
- PEDIGREE & COMMERCIAL LIVESTOCK
- OFFICIAL SOCIETY SALES OF BEEF, DAIRY & SHEEP
- TRACTORS, MACHINERY & COMMERCIAL VEHICLES
- SPECIALIST LIVESTOCK SALES, EQUINE & EVENTS
- PROFESSIONAL VALUATIONS
- ONLINE INTERNET BIDDING



01228 406200

harrisonandhetherington.co.uk

BORDERWAY MART, CARLISLE, CUMBRIA CA1 2RS

